

FallTech Size Chart

FallTech – Single Size Harness Sizing

Size	Torso Strap	TB Leg Strap	MB/QC Leg Strap	Waist Belts
XS	32-49 in	16-28 in	14-30 in	30-39 in
S	38-51 in	18-30 in	16-32 in	34-43 in
M	40-53 in	20-32 in	18-34 in	38-47 in
L	42-55 in	22-34 in	20-36 in	42-51 in
XL	46-57 in	24-36 in	22-38 in	46-55 in
2XL	48-60 in	26-38 in	24-40 in	50-59 in
3XL	51-62 in	28-40 in	26-42 in	54-63 in
4XL	50-64 in	30-42 in	28-44 in	58-67 in

FallTech – Dual Size Harness Sizing

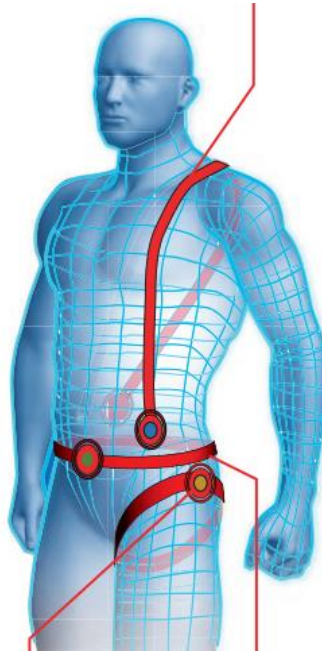
Size	Torso Strap	TB Leg Strap	MB/QC Leg Strap	Waist Belts
S/M	43-53 in	18-30 in	16-32 in	34-47 in
L/XL	45-58 in	22-34 in	20-36 in	42-55 in
XL/2XL	49-68 in	24-36 in	22-38 in	46-59 in
2XL/3XL	51-63 in	26-38 in	24-40 in	50-66 in
3XL/4XL	52-64 in	28-40 in	26-42 in	54-70 in

FallTech – Universal Fit Harness Sizing

Size Torso	Torso Strap	TB Leg Strap	MB/QC Leg Strap	Waist Belts
Universal	47-60 in	19-31 in	17-33 in	UNI

TB = Tongue Buckle | MB = Mating Buckle | QC = Quick Connect Buckle

FallTech Size Chart



How to Measure for A Great Fit

Because your harness is the most important element of any personal fall arrest system, it must fit properly to deliver the highest level of safety. After you select your FallTech harness, follow these three simple steps to find your exact size.

Torso Strap:

- Measure from 3 inches left of navel. Upward over left shoulder towards lower right side of back.

Leg Strap:

- Measure the circumference around the thigh from the crotch to the underneath the hip bone.

Waist Belts:

- Measure the circumference around the waist just under the navel.

Note: All measurements are to be taken over clothing