

# PRODUCT DATA SHEET

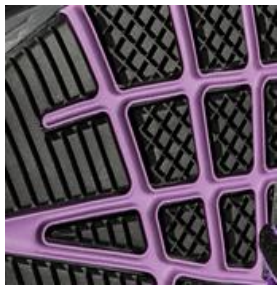


## STEPPER 2.0 WNS MID ASTM F2413-18 EH

Art. No. 633895



- Protection:** composite-fiberglass toe cap
  - Plus:** metal free, electrical hazard, TPU heel protection
- Upper:** microfiber / mesh and PU
- Lining:** BreathActive functional lining
- Footbed:** Evercushion® CUSTOM FIT
- Shank:** TPU torsion control element
- Midsole:** IMPULSE.FOAM® midsole in two different densities for maximum cushioning, stability and comfort
- Outsole:** rubber outsole, abrasion, oil & slip resistant, 572°F heat resistant
- Color:** Black - purple
- Sizes:** 5, 6 - 10, 11 (and half sizes)



### RUBBER SOLE MOTION

The 572°F heat resistant HRO rubber outsole is inspired by the latest running shoe technology. The antislip sole profile with its diagonal flex grooves ensures optimum flexibility and maximum traction (SRC).



### TORSION CONTROL ELEMENT

The TPU torsion control element in the middle of the sole supports the natural flexing action of the foot while walking and provides a better support and stability for the feet.



### IMPULSE.FOAM® MIDSOLE

The intelligent midsole made of IMPULSE.FOAM® reacts to every step with an energy impulse. As a result, the IMPULSE.FOAM® not only returns up to 55% of the energy, but also ensures maximum cushioning, excellent stability and long-lasting comfort.



### evercushion® CUSTOM FIT

This anatomically designed footbed provides a high level of comfort and moisture control, giving a pleasant foot climate. The well defined arch support ensures the natural positioning of the foot in the shoe and stimulates the muscles when walking.

*Developed by an orthopedic shoemaker for professional and leisure footwear.*