

PRODUCT DATA SHEET

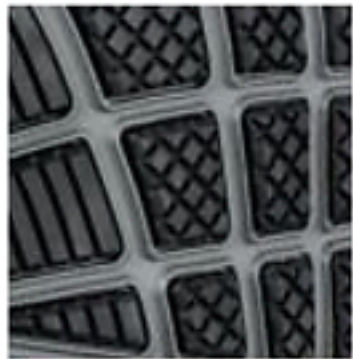


VELOCITY 2.0 BLACK WNS LOW ASTM F2413-18 SD

Art. No. 643965



- Protection:** composite-fiberglass toe cap
- Plus:** metal free, abrasion resistant toe overlay, heel support
- Upper:** high quality smooth leather with TPU side support
- Lining:** BreathActive functional lining
- Footbed:** evercushion® BA
- Shank:** TPU torsion control element
- Midsole:** IMPULSE.FOAM® midsole in two different densities for maximum cushioning, stability and comfort
- Outsole:** rubber outsole, abrasion, oil & slip resistant, 572°F heat resistant
- Color:** black
- Sizes:** 5, 6 - 10, 11 [and half sizes]



RUBBER SOLE MOTION

The 572°F heat resistant HRD rubber outsole is inspired by the latest running shoe technology. The antislip sole profile with its diagonal flex grooves ensures optimum flexibility and maximum traction [SRC].



TORSION CONTROL ELEMENT

The TPU torsion control element in the middle of the sole supports the natural flexing action of the foot while walking and provides a better support and stability for the feet.



IMPULSE.FOAM® MIDSOLE

The intelligent midsole made of IMPULSE.FOAM® reacts to every step with an energy impulse. As a result, the IMPULSE.FOAM® not only returns up to 55% of the energy, but also ensures maximum cushioning, excellent stability and long-lasting comfort.



EVERCUSHION® BA

This anatomically designed footbed provides a high level of comfort and moisture control, giving a pleasant foot climate. This footbed, as used in high performance sports shoes, is made from a soft, open-cell, resilient foam that will not compress in wear, which assures a high level of cushioning, breathability and moisture regulation.